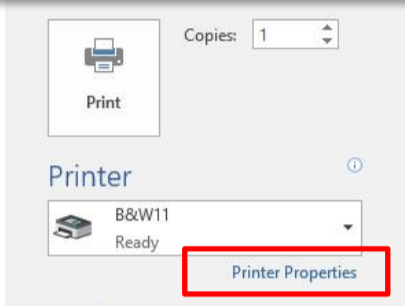


Print

Operation Guide on PC

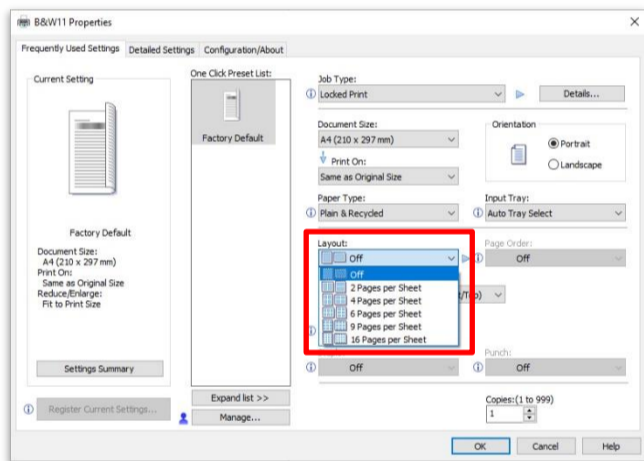
STEP 1



- Select the B&W printer or Colour printer for printing
- Click the **"Printer Properties"/ "Preferences"** from the print dialogue

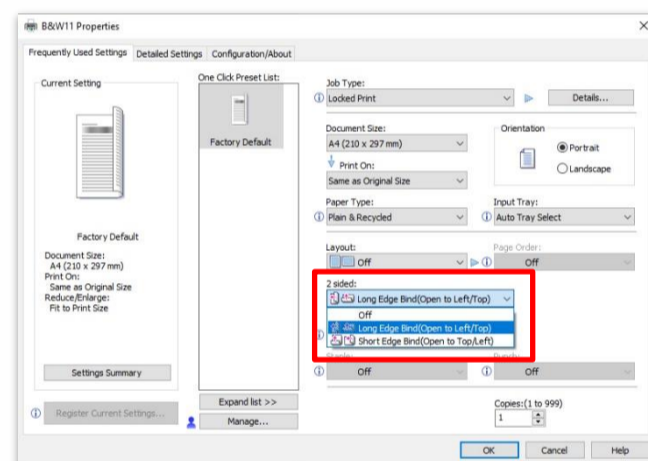
STEP 2 (Optional)

Multiple Pages on One Sheet





- Select the number of pages per sheet from the **"Layout"** menu

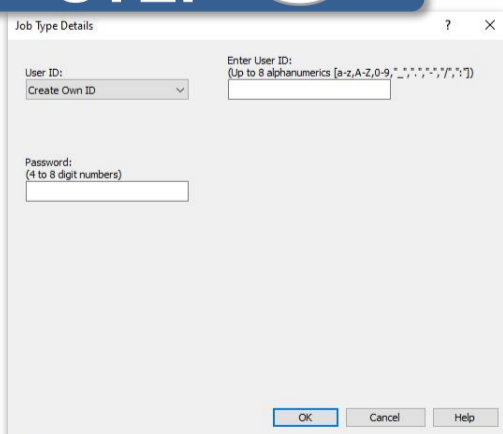
Single/Double-Sided



From the **"2 sided"** menu:

-  Portrait-oriented document, select **"Long Edge Bind"**
-  Landscape-oriented document, select **"Short Edge Bind"**
- Switch to single-sided, select **"Off"**

STEP 3



- Input 4-8 alphanumeric characters in the self-assigned **User ID** and 4-8 digit numbers in the **Password (PIN)** fields

