

Library Matters

August 2015

Issue 09



Francesco Lietti, *Colours of Mongkok!* 100x240cm (2 panels) mixed media on canvas, 2014.

Message from the University Librarian

Thank you all for participating in the library's annual surveys. After four years at Lingnan, I am very happy to report that library survey results show steady and continuous improvements to library services. We appreciate your feedback, and guided by your input, we will continue to improve library services. This year, we are working on two large projects that, while not very visible at the moment, will significantly impact library services and operations in coming years.

Re-imagine the Library

This year an architect will help us re-imagine our library as a space to support teaching, learning and research. The last large-scale library renovation in 2003-2005 added two more floors to the Library. Since then, four building projects were conducted to address different immediate issues, just as we now need to address an acute shortage of shelving for the growth of the library collection. Instead of focusing solely on expanding shelving capacity we think now is the time to take a broader view and re-imagine library spaces to provide better library and IT services that also incorporate suggestions on facilities that we have received from you over the years.

We plan to invite both staff and students to work with us as we begin to plan the library for the future. With an architectural plan in place, we will then work with the University to seek UGC funding for the actual construction.

Integrate HKALL with a shared JULAC library online system

HKALL is one of the most visible cooperative projects supported by The Joint University Librarians Advisory Committee (JULAC), the library consortium of the eight UGC libraries. One of the primary focuses of JULAC is deep collaboration among member libraries. In support of this goal we have decided to find a new software platform that will allow the eight libraries and HKALL to share one system, replacing the eight individual online systems and the separate HKALL server, greatly reducing system maintenance while creating flexibility to improve the level of service. Once the eight library systems and the HKALL

server are merged we will be able to

- 1) redirect staff resources to new projects and services critical to you, and
- 2) create additional collaborative projects that will further reduce highly labor-intensive processes currently duplicated at each campus.

With the University's support, the joint Request For Proposal (RFP) for a new-shared library online system is now open for tender. Once we have all of the proposals, an intense evaluation process will be conducted by the eight UGC libraries to select a new system. Following selection of a system the critically important process of data migration and modeling new work flows and procedures will begin. Our goal is to have the new system ready for Term 1, 2017/2018.

I would also like to take a moment to thank you for your participation in Term two's Ithaka S+R Faculty Survey (11 Mar- 10 Apr). This survey was conducted to help us better understand the impact of digital technologies on your research, teaching, and publishing. We plan to use your feedback and insight to plan new services that will better support you and your academic work.



Rachel Cheng

Chief Information Officer
& University Librarian

2015 Library User Satisfaction Survey (4 - 17 May)

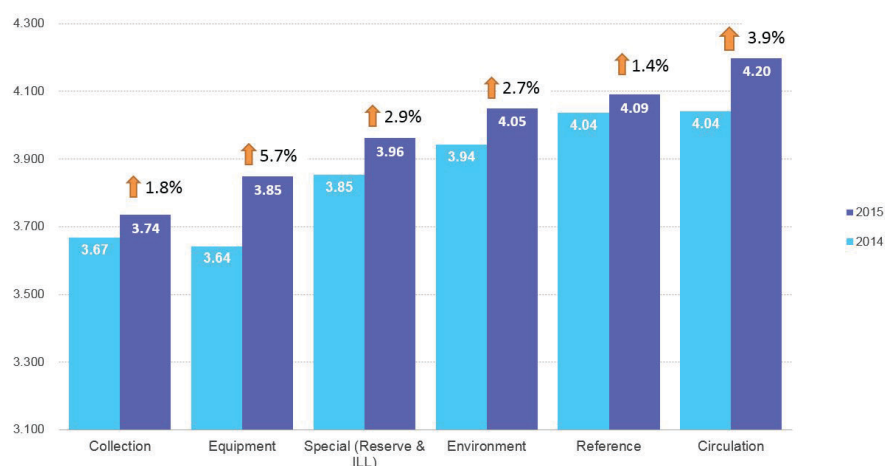
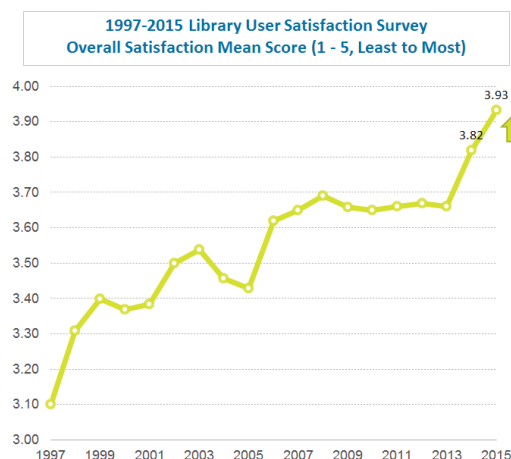
Thank you very much for your participation and comments. We are proud to learn that the overall satisfaction score is 3.93 in 5-point scale which is the highest score in second consecutive years.

"Equipment" has the greatest increase of 5.7%. The upgrade of all PCs in the Information Commons area and printing facilities enhancement last year probably improved the quality of services in this area. We are committed to provide user-oriented services to support teaching, learning and research.

For the detail of the survey result :

<https://www.library.ln.edu.hk/about/library-statistics-and-surveys/user-survey-2015>

2015 Library User Satisfaction Survey
Satisfaction Mean Score (1 - 5, Least to Most)



Lingnan Ithaka S+R Local Faculty Survey 2015

With support from Prof. Shalendra Sharma, Acting Vice-President, the Lingnan Library conducted the first Ithaka S+R Local Faculty Survey in Mar and Apr 2015. We must express our heartfelt gratitude to those 71 faculty members who had kindly filled out the questionnaire. The Ithaka Survey is an international survey instrument to study the impact of digital technology on research, teaching and publishing on academics. Three other local universities took the same survey altogether.

Fast Fact

84%

Respondents considered that the library collections and subscriptions were extremely important for their teaching and research

In this survey, 84% of the Lingnan respondents considered that the library collections and subscriptions were extremely important for their teaching and research. 46% considered the Library having an important role in managing and preserving of research data for them at this moment, while 64% of them relied on some freely available software for such a purpose.

For the full report, please access at:

<http://www.library.ln.edu.hk/about/library-statistics-and-surveys/ithaka-2015>

1st Term 2015-16 Library Workshops

The new series of Library Workshops will start on 21 Sep 2015. Online Registration begins on 1 Sep 2015 (Mon) at:

<http://www.library.ln.edu.hk/services/workshops>

Some highly sought after courses are:

- LIB100 Introducing Library Resources & Information Literacy Skills
- LIB110 Searching Journal Articles
- LIB120 Introducing Multi-media & Language Learning Resources
- LIB170_1 Using RefWorks: Basic



Library New Student Orientation 2015



This summer, we have a brand new Library New Student Orientation–

Mission Possible.

It aims to help student to know the Library's services

and facilities better and make the best use of them through an interesting game. To complete the mission, students in group have to complete 10 tasks including how to read the book's call number in order to find the book from our collections, how to ask our professional librarian question using the Chat Reference service, how to search the Library's resources by using the 1-Search discovery search engine, how to know whether you are at risk of plagiarism... Winning teams will be generously rewarded. Can't wait to see you then.

Library Orientation video 2015

In a hot summer weekend, one film director, four student actors and several supporting staff worked hard to produce the important short film for the several hundreds of Lingnan new students. We are delighted to have a talented third year student from Department of Visual Studies to help us to film the latest 2015 Library Orientation video. Four student actors from different faculties spoke out their reasons to come to the Library and how they make the best use of the Library's resources. You can watch the video at:

<http://www.library.ln.edu.hk/about/library-orientation/video>



New Service/ Facilities

Book Chapter on Interlibrary Loan Services

In the past, you could only request journal articles or physical book through our Interlibrary Loan Services. From Sep 2015, book chapter (softcopy via email) from other local and overseas libraries collections can be requested. It will save a lot of time if you only need a chapter from a book. As at Jul 2015, 91 libraries participated this book chapter sharing service, libraries of Princeton University (US), Michigan State University (US), National Cheng Kung University (Taiwan), Hong Kong University of Science & Technology are some examples. For more details, please visit:

<http://www.library.ln.edu.hk/services/interlibrary-loan-service>

Self-check machine

The new self-check machine located near the 1/F circulation counter to facilitate the borrowing of books is now in service. You can check out General Collections items easily with a few simple steps. You can watch the video guide on how to use the machine at:

<http://www.library.ln.edu.hk/facilities/self-check-machine>



New E-Databases

American History, 1493-1945 and Slavery

This database documents American History from the earliest settlers to the mid-twentieth century. It is sourced from the Gilder Lehrman Collection.

Global Commodities: Trade, Exploration and Cultural Exchange

Contains manuscript, printed and visual primary source materials for the study of global commodities in world history.

Slavery, Abolition and Social Justice, 1490-2007

This digital collection documents key aspects of the history of slavery worldwide over six centuries. Topics cover the African Coast, the Middle Passage, the varieties of slave experience, religion, revolts, abolition, and legislation. The collection also includes case studies from America, the Caribbean, Brazil, and Cuba.

Past Events/ Exhibitions

The Exhibition of "Creativity Movement Space"

"Why has the Umbrella Movement nurtured such an amount of creativity?"

"How does art play a role in social movement?"

These are the questions we want you to think for this exhibition.

Sponsored by Drs Richard Charles & Esther Yewpick Lee Charitable Foundation, The exhibition of Creativity Movement Space was organized from 5-27 Feb 2015 at 1/F, Library as prelude to the Lingnan Arts Festival 2015 in March.

We are very grateful for the support from artists, including , **Mr Edward Cheung, Mr Birdy Chu, Mr Francesco Lietti, Mr Him Lo and Ms Wen Yau.**

They shared their works and creative journeys with us at the exhibition's opening ceremony cum talk held on 5 Feb. The Lingnan Arts Festival 2015 was held on 4-31 Mar 2015. For details, please visit: <http://www.ln.edu.hk/arts/af2015/>



The Exhibition of "The Magic of Ballpoint Pen Art"

"The Magic of Ballpoint Pen Art" exhibition was part of the diversified programme of Lingnan's Equal Opportunities

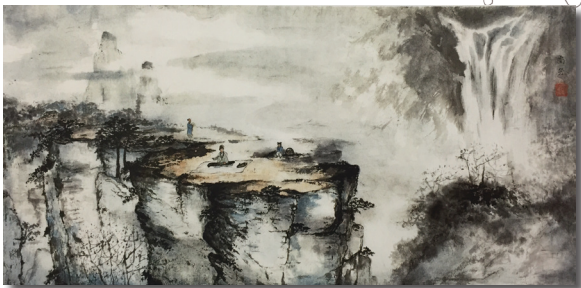


Awareness Week. The exhibition showcased more than 20 paintings by Mr. Dipendra Rai from 4-14 Mar 2015. He is a Nepalese artist and is famous for paintings on portraiture and nepalese scenery by using ballpoint pen.

It was our honor to have the Consul General of Nepal, Mr. Mahesh Prasad Dahal, to officiate the exhibition on 7 Mar 2015.

"Xinyun- Exhibition of Lau Lan Fong"

心韻：劉蘭芳畫展



The exhibition was held from 16 Mar to 10 Apr 2015 on 1/F & 2/F University Library and showed more than 30 pieces

of her recent works. Mdm Lau Lan Fong is the wife of the late Lingnan master, Mr. Yang Shan-shen.

Book for recommendation:

劉蘭芳(2014)。《劉蘭芳畫集》。香港：春風草堂。

Call number: PN2878.L554 L4 1993

Celebrating: Research at Lingnan

Lingnan University produces excellent scholarship. In order to honour distinguished authors, from Jan to Apr 2015, the Library co-organized 3 new book launch sessions in the Library Lobby for **Prof. Chan Tsang-sing, Prof. Cui Geng, Prof. Davis Richard Lee, Prof. Han Xiao-rong, Prof. Huang Ying-ling, and Prof. Li Siu-leung**, and held one book talk by **Prof. Ho Lok-sang**. All events were well attended by staff and students. We are very grateful with the other co-organizers like the Office of the President and the respective academic units for making these events happened.

